

- Life cycle of CSRB is one year.
- CSRB adults lay eggs on living tissues in the crevices of loose bark of cashew stem or exposed parts of roots above ground.
- Eggs are whitish, ovoid, 3 mm in length (looks like rice grains). The egg period is 4-7 days.
- Eggs hatch out as tiny grubs, which bore into the fresh tissues of the bark.
- Grubs feed on tissues for 4-7 months. The grown up grubs are off- white in colour measuring 7-10 cm in length.

Management practices

- Avoid injury to cashew trees.
- Cut and destroy damaged cashew branches along with eggs and grubs.
- Locate loose bark and boreholes, destroy eggs and grubs
- Avoid exposing cashew roots.
- Apply wood ash (15-20 kg/tree) and common salt at root zone to reduce root infestation.

- Smear lime on bark and crevices.
- Apply *Metarhizium anisopliae* or *Beauveria bassiana* spawn @ 250 gm/tree + 500 gm Neem cake /tree during October-November.
- Swab the bark with Neem oil @ 50 ml/lit.
- Swab the trunk with a mixture of coal tar and kerosene (1:2 ratio) or Chloropyrifos @ 0.02% twice a year during March-April and Nov-Dec.
- Root feeding of Monocrotophos @ 20 ml/tree is also effective.



Prepared by

Mr. Rajan Shelke, Assistant Professor
Dept. of Agril. Entomology

Published by

Dr. Suresh Kunkalikal, Principal

For details contact

Don Bosco College of Agriculture,
Sulocorna, Quepem - Goa. 403705



CASHEW STEM AND ROOT BORER (CSRB) AND MANAGEMENT



DON BOSCO COLLEGE OF AGRICULTURE
Sulocorna, Quepem - Goa 403705

Introduction

In Goa, Cashew is an important commercial crop cultivated in an area of 55,000 ha and annual production of 23,138 tonnes with average yield of 415 kg/ha.

Cashew is mainly infested by major pests - Stem and root borer, Tea mosquito bug, Leaf miner, Apple and nut borer. The minor pests include Thrips, Leaf and blossom webber and Mealy bug.

Cashew stem and root borer is major pest of cashew causing nearly 10% loss in income annually.

This brochure is especially prepared to create an awareness on damage caused by Cashew Stem and Root Borer and its Management.



Public Demonstration On CSRB Management



Grub of CSRB



Grub of CSRB



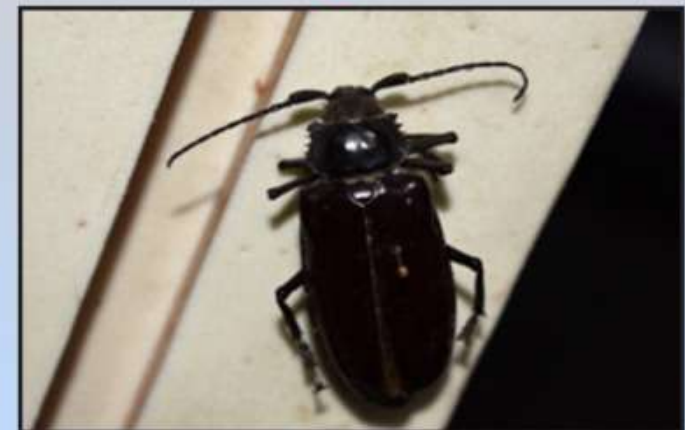
Exuding gum from stem



Wilting of tree



Wilting of tree



Adult CSRB